

DIANA 65-1 Setting Range and Technical Data

The DIANA 65-1 Can Grow with Your Requirements

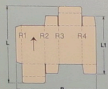
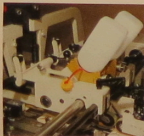
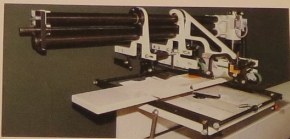
The following auxiliary equipment can be supplied with the DIANA 65-1 or retrofitted:

- 8. Lockbottom unit with tuck-in unit for lockbottom cartons with a height-width ratio of max. 1:10.
- 9. Double overhead glue unit for prefeeder or folding section. For gluing lockbottom, double-wall, partition and tapered cartons as well as mailing envelopes.
- 10. Miniature carton unit with 10 mm folding belts for perfect, gentle folding when spacing between crease lines 1 and 2 is small.

Other additional equipment:

- double-wall and partition carton attachment

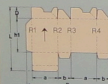
- mailing envelope/record sleeve attachment
- code reader and ejector
- glue film monitor
- glue refill unit
- electronic, blank-dependent control of compression/delivery section (stacker)
- blank stack pressing unit for feeder
- additional bottom apron and top compression track for compression/delivery section
- makeready table for preparing lockbottom attachment apart from the DIANA as well as drive for installing and removing lockbottom unit by motor.



1. Straightline Cartons

B	75-730 mm
L max	600 mm
L1 min	55 mm

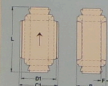
Operating speed: 300 m/min



2. Lockbottom Cartons

B	730 mm
L max	600 mm
D max	135 mm
h1 min	50 mm
a min	60 mm
b min	30 mm

Output max. 50,000 cartons/h



3. Double-Wall Cartons

B	60-525 mm
L	85-600 mm
C1 max	730 mm
D1 max	710 mm
F min	15 mm

Operating speed: 300 m/min

Other dimensions as per infolec.

Cardboard material	folding boxboard (gsm)	corrugated board
1. Straightline	200-600	E-flute
2. Lockbottom	250-600	E-flute
3. Double-wall	200-600	E-flute

Space requirements length/width	10.6/1.2 m
Net weight	5,400 kg
Standard packing volume	30 cubic meters
Total connected load	25 kVA

All data given are approximate values.

Further details on the DIANA 65-1 and other machines in our manufacturing program are available on request.

JAGENBERG AG
Kernstr. 11/23
D-4030 Düsseldorf 1
Tel. (211) 43 93-01
Telex 8 562 741
Fax (211) 43 93 495

The JAGENBERG Delivery Program for Universal Folding Carton Gluers and Packers

The DIANA program comprises machines for all major carton types in a variety of price and output categories:

- universal high-speed machines for the most important carton styles including collapsible boxes, as well as
- special machines for lockbottom (crash-lock) cartons, for mass-producing standard straightline folding cartons and for manufacturing liquid-proof cartons.

The DIANA modular system permits retrofitting many accessories so that tomorrow's market demands can be met with the machine installed today.

- Completing the DIANA program:
- JAGFEED pre-feeder
- JAPACK universal folding carton packer
- SB collator/stacker

JAGENBERG - Technology for a Competitive World

Subject to alterations
Printed in West Germany
Sch. 91, 30.10.88 30/85

DIANA 65-1

The Small Folding Carton Gluer with Many Advantages of the Big DIANA Models



DIANA 65-1 **The Compact and Economical** **Folding Carton Gluer**

For many decades JAGENBERG has been cooperating with carton makers all over the world. Thus there is a constant flow of information on product demands. The DIANA 65-1 is the product of this information exchange, combining technical know-how for the production of carton gluers, state-of-the-art technology and computer-aided design and manufacture (CAD/CAM). The DIANA 65-1 is simple to operate, versatile and economical – corresponding to today's and tomorrow's market demands.

Versatility through the Modular Construction Principle
 The DIANA 65-1 is designed for the economical production of all essential carton styles in continuous operation, such as straightline folding cartons, lockbottom and double-wall cartons, record sleeves and mailing envelopes as well as other special-ties.

The DIANA 65-1 modular construction principle permits expanding the machine with accessories at any time.

The DIANA 65-1 can also be combined with the JAGFEED pre-feeder and the JAPACK universal carton packer. These machines facilitate feeding and taking-off the cartons regardless of operating speeds.

The DIANA 65-1 size range permits folding and gluing from smallest pharmaceutical cartons to large blanks up to 730 mm (28 3/4") open blank width. This size range covers a very high percentage of cartons on the market.

Sustained Quality through Proven Technology
 The DIANA quality control systems reduce waste. An electronic code reader* identifies cartons and monitors their print and register accuracy. An automatic ejector* effectively "kicks out" faulty cartons, regardless of speed.

An electronic glue film monitor* ensures precise glue application through micro-wave technology. **Attention to Detail – The Basis for DIANA Economy**
 Being able to replace folding and carrier belts without having to bother with removing shafts yields great time savings.

The roller bar rapid lift-off feature simplifies adjustments and removing jammed blanks.

A high-performance bottom glue unit together with overhead glue units* with individual height adjustment ensure that glue is applied faultlessly.

The controlled "left-before-right"

folding action ensures that even the shortest blank is transported without twisting in every phase of the folding process by at least two bottom and one top roller bar.

The blank-dependent control of the compression and delivery section (stacker) ensures trouble-free carton transfer from gluer to stacker

and reliable bonding of the glue seams in a 2 meter (6'6") long pressing section which can be extended*, if necessary.

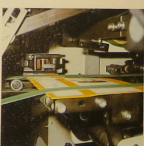
Maintenance is no different from the bigger DIANA models: it is limited to cleaning machine and glue units, as well as greasing only a few points. This reduces downtimes

thereby increasing the time the DIANA is available to run jobs and make a profit.

*Auxiliary equipment

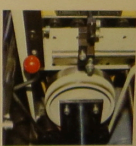


4/5. Electronic counter in 2 versions, simple or sophisticated. Electro-magnetic kicker marks lots from 1 to 999 by "kicking out" every nth carton to the side.



6. Reliable, test-free blank transport in every phase of the folding operation through the proven left-before-right kiding technique.

7. Easy maintenance because folding and carrier belts can be changed without removing shafts.



1. Feeder: easy changeover to other sizes. Feeder side walls are quickly shifted. Additional features: fine adjustment of feeder walls through micrometer screws*, vibrator* with adjustable frequency for trouble-free de-feeding of blanks, electro-magnetic clutch and brake for stopping feeder separately.

2. Bottom glue unit: protected against corrosion inside and out. Quick installation and removal. Rapid glue wheel changeover. Knurled glue wheels. Micrometer screw for fine adjustment of glue film.

3. To simplify make-ready, top roller bars can be lifted off with economic hand lever.

