

BIZZOZERO MICA - S.R.L.

Macchine per imballaggio cartotecnica ed affini

Sede Legale e Stabilimento :
Velate Milanese - Via G. Verdi, 13
20040 USMATE - VELATE (MI)
Tel. 039-6076754 (3 linee r.a.)
Fax 039-6076905 (modem)
E-mail bizzozero.mica@interbusiness.it
info@bizzozeromica.it
<http://www.bizzozzeromica.it>



Stitching machine Mod. XA 32



STITCHING MACHINE MODEL XA 32

Bizzozero Mica S.r.l., manufacturer of quality machines for corrugated converting industry, presents this new stitching machine for high thickness corrugated carton (till to 15 mm.), in order to meet the demands of today's modern sheet plants.

This new stitching machine model XA 32 has a pont structure for a major strongness and a wide working table allows to treat sheets of considerable dimensions with a minimum effort of the user.

The original stitching head of Bizzozero Mica has been studied expressly for large thickness and that's the reason why the maximum length of legs goes till to 32 mm. The head, which runs on in line bearings, is movable and sets up by an electric commande. Two lateral squares support the correct alignment of stitching. Suitably dimensioned the head doesn't need of much maintenance.

The head motor, mounted directly on the head support, transmits the movement by a telescopic joint with consequently reduction of noise and total avoiding of maintenance.

The stitcher is available in three different versions - 3000 mm., 3600 mm., 4000 mm., 4400 mm. - according to the working width desired.

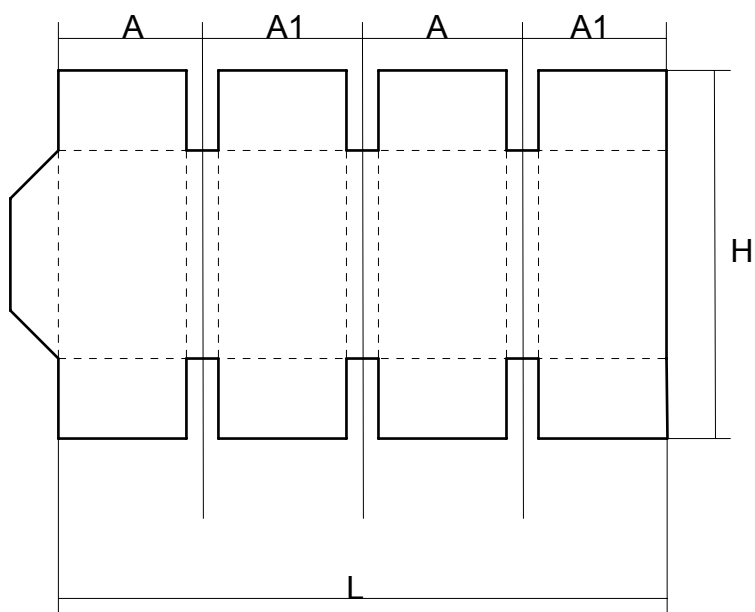
XA 32

TECHNICAL FEATURES

VERSIONE - VERSION	3000	3600	4000	4400	
Velocità della testa <i>Speed of the head</i>	n° punti / min. <i>n° stitches / min.</i>	235	235	235	235
Spessore minimo di cucitura <i>Minimum thickness of the board</i>	mm. 5	mm. 5	mm. 5	mm. 5	
Spessore massimo di cucitura <i>Maximum thickness of the board</i>	mm. 32	mm. 32	mm. 32	mm. 32	
Filo impiegato (per tutte le versioni) <i>Type of wire (for all versions)</i>	2,30x0,90 - 2,50x0,50 - 2,50X0,60				
Inclinazione del punto <i>Slanting of the stitch</i>	45°	45°45°		45°	
Potenza installata <i>Installed power</i>	KW 0,8	KW 0,8	KW 0,8	KW. 0,8	
Numero di punti minimo <i>Minimum n° of stitches</i>	1	1	1	1	
Numero di punti massimo <i>Maximum n° of stitches</i>	infinito				
Larghezza macchina <i>Machine width</i>	mm. 3530	mm. 4130	mm. 4530	mm. 4930	
Lunghezza <i>Length</i>	mm. 1730	mm. 1730	mm. 1730	mm. 1730	
Altezza <i>Height</i>	mm. 1950	mm. 1950	mm. 1950	mm. 1950	
Peso <i>Weight</i>	Kg. 1500	Kg. 1800	Kg2000	Kg. 2300	
Passaggio utile <i>Working width</i>	mm. 3000	mm. 3600	mm. 4000	mm.4400	

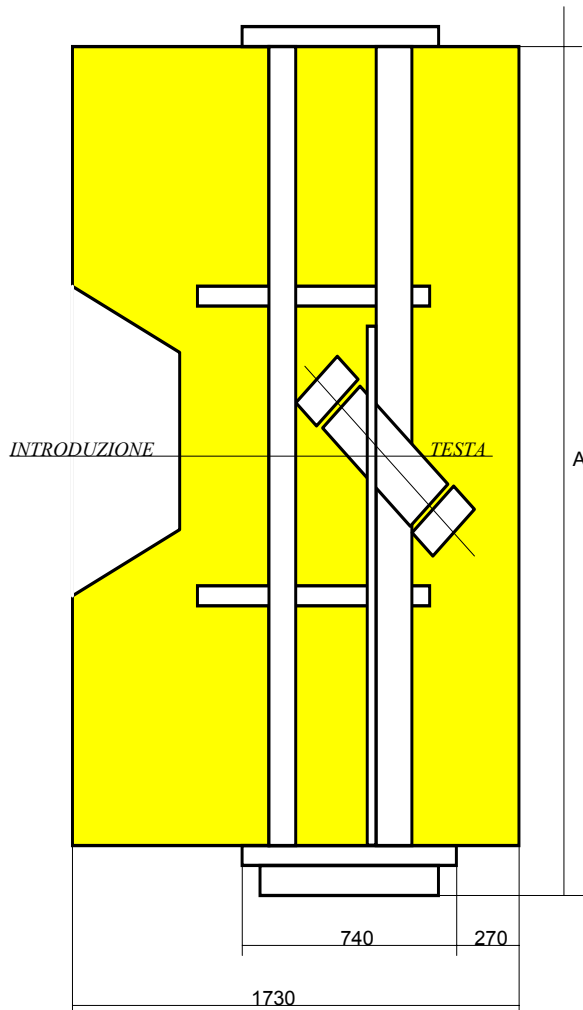
Technical datas, dimensions and weight are given for general information only.

DIMENSIONI SCATOLA
BOX DIMENSIONS
DIMENSIONS DE LA BOITE



	H	L	A	A1	A+A1
MIN	220	300	75	75	150
3000 -MAX	N.L.	6000	1500	2540	3000
3600 -MAX	N.L.	7200	1800	3140	3600
4000 -MAX	N.L.	8000	2000	3540	4000
4400 -MAX	N.L.	8800	2200	3940	4400

LAY OUT



VISTA IN PIANTA

	vers. 3000	vers. 3600	vers. 4000	vers. 4400
A	3530	4130	4530	4930
B	3200	3800	4200	4600

VISTA IN ALZATA

