

BIZZOZERO MICA S.R.L.

Macchine per imballaggio cartotecnica ed affini

Sede Legale e Stabilimento :

Velate Milanese - Via G. Verdi, 13

20040 USMATE - VELATE (MI)

Tel. 039-6076754 (3 linee r.a.)

Fax 039 - 6076905

E-mail bizzozero.mica@interbusiness.it

<http://www.info@bizzozeromica.it>

www.bizzozeromica.it



***Stitching machine Model 2002
with oscillating head***

**STITCHING MACHINE MODEL 2002
WITH OSCILLATING HEAD**

The 2002 semiautomatic machine is suitable for stitching, glueing or both gluing-stitching boxes of corrugated cardboard of various types.

The machine composes of a using feed table, stitching-glueing unit and counter ejector.

The using feed table has rollers to assist the loading-positioning of the corrugated board.

Size on using feed table mm 3500 x 1030. Max up and down movement is 1050 mm.

Automatic adjustment of stack height at infeed point.

Standard lenght of counter ejector can be extended by a further 2000 mm. on request.

Automatic pile count by adjustable pre-set electronics .

The 2002 Model

Oscillating head (700 stitches per min). Without clutch-brake group

Electronic control of placings and counting stitches.

STITCHING MACHINE MODEL 2002 WITH OSCILLATING HEAD
TECHNICAL FEATURES

Stitches speed <i>Punti cucitura</i>		700/1'
Stitch width <i>Larghezza punto</i>		mm. 14
Size of stitching wire <i>Lastrina tipo</i>		mm 2,50x0,50
Staple leg length <i>Lunghezza gambo</i>		8-10-12-15 mm
Max stitching thickness <i>Spessore max cucitura</i>		mm. 16
Slanting of the stitch <i>Inclinazione del punto</i>		45°
Min.distance between stitches <i>Distanza minima tra i punti</i>		mm. 20
Max distance between stitches when on continuous cycle <i>Distanza max tra i punti a ciclo continuo</i>		mm. 80
Stitching head will automatically change from continuous running to stop-start mode when stitch pitch is more than <i>Distanza minima tra i punti a ciclo alternato</i>		mm. 150
Working width <i>Passaggio utile scatola</i>		mm. 2200
Power of head motor <i>Potenza motore testa</i>		KW 0,75
Power of elevator motor <i>Potenza motore elevatore</i>		KW 1,87
Power of movement head motor <i>Potenza motore spostamento testa</i>		KW 0,37
Power of transport motor <i>Potenza motore trasporto</i>	KW 1,5	
Total power <i>Potenza totale</i>		KW 4,49
Weight <i>Peso</i>		Kg. 2500

ELEVATING UNIT MODEL 2002

Max capacity	KG.	600
Overall height	mm.	300
Useful height	mm.	1050
Size of platform	mm.	3500x1030

Above technical data, dimensions and weights are not binding. Possible changes can take place at any time.

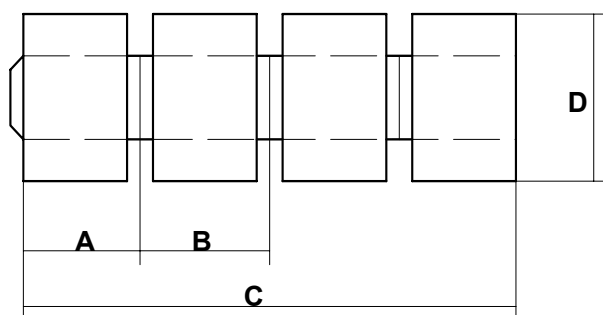
BIZZOZERO MICA S.R.L.

2002

con testa oscillante
with oscillating head
avec tete oscillante

DIMENSIONI SCATOLA RETTANGOLARE
RECTANGULAR BOX DIMENSIONS
DIMENSIONS DE LA BOITE RECTANGULAIRE

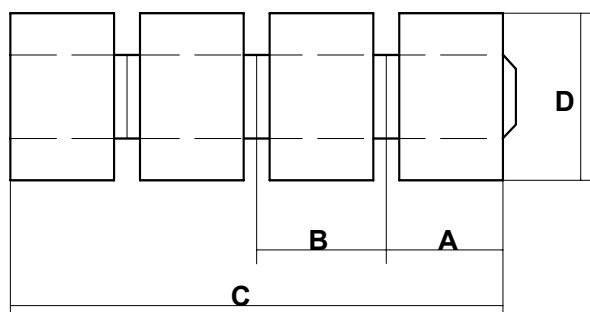
PATELETTA A SINISTRA
STITCH LAP ON THE LEFT
PATTE A GAUCHE



	MIN	MAX
A	160	1700/450
B	140	450/1700
C	600	4300
D	270	2000/2300

DIMENSIONI SCATOLA RETTANGOLARE
RECTANGULAR BOX DIMENSIONS
DIMENSIONS DE LA BOITE RECTANGULAIRE

PATELETTA A DESTRA
STITCH LAP ON THE RIGHT
PATTE A DROIT



	MIN	MAX
A	80	1700/450
B	180	450/1700
C	520	4300
D	270	2000/2300

BIZZOZERO MICA S.R.L.

2002 *con testa oscillante*
with oscillating head **LAY OUT**
avec tete oscillante

