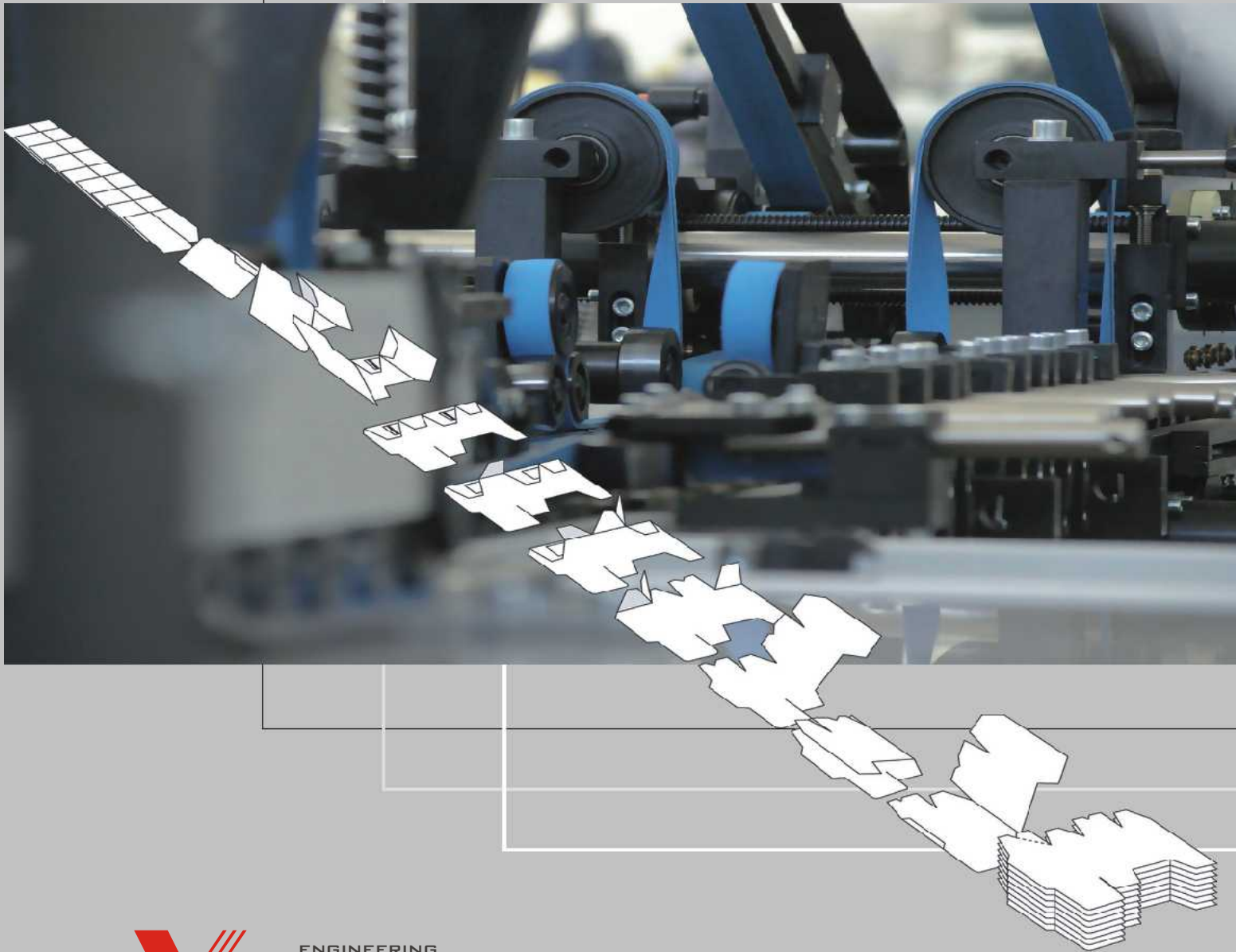

FOLDING and GLUING MACHINE

SERTO

FOR CARTON BOX INDUSTRY

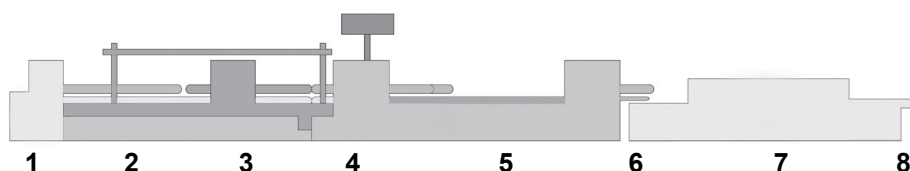


BASIC VERSIONS

SERTO folder gluer is 4 versions available which are:

- k1 : straight line boxes ready
- k3 : crash lock bottom boxes ready
- k4 : 4 corner collapsible boxes ready
- k6 : 6 corner collapsible boxes ready

- **k1 / k3 cross section - crash lock bottom version :**



1 Feeder

2 Prefolding section

3 Lockbottom module

4 Gluing section

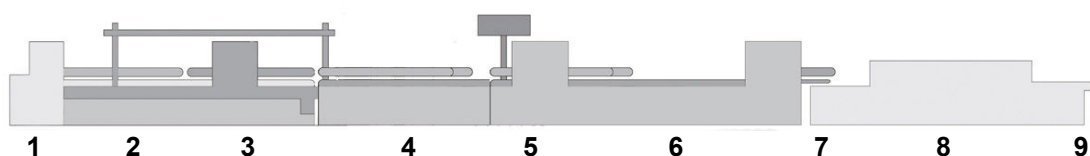
5 Folding station

6 Transfer station

7 Compression module

8 Delivery section

- **k4 / k6 cross section – back folding versions :**



1 Feeder

2 Prefolding section

3 Lockbottom module

4 4 or 6 corner module

5 Gluing section

6 Folding station

7 Transfer station

8 Compression module

9 Delivery section



TECHNICAL DATA

CONVERTIBLE STOCK

Folding box board	GSM	200 - 800
Microflute	TYPE	N - F - E
Corrugated board	TYPE	B - C - A

DRIVE SYSTEM

Inching speed	m/min : ft/min	10 / 32,8
Operating speed *	m/min : ft/min	20-200 / 65-656
optional	m/min : ft/min	20-300 / 65-984

SPACE REQUIREMENT

Length	m : ft	11,50 / 37,73
k3 version	m : ft	11,50 / 37,73
k4 / k6 version	m : ft	13,70 / 44,95
Width	m : ft	2,05 / 6,73
Height	m : ft	1,48 / 4,86
Weight, approx.	t : US t	4,60 / 5,53

INSTALLATION

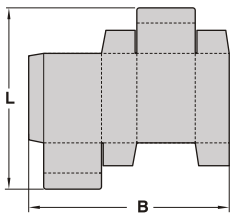
Voltage	V	400 N-PE / 208 3PH
Motor power	kW	18,00
Compressed air	bar : psi	6 / 87

MAJOR OPTIONS

- MANUAL or MOTORIZED setting system
- FRICTION or VACUUM feeder
- SQUARING device at transfer station
- MECHANICAL or PNEUMATIC compression station
- VIDEO MONITORING system
- ADDITIONAL GLUE GUNS (1 - 16 pcs)
- COMPACT or TOP-GUARD glue controller
- CODE READING and/or GLUE TRACK CHECKING
- Failed boxes EJECTOR
- HOT-MELT or PUR gluing systems
- BRAILLE embossing device
- WINDOW PATCHING device
- GRINDING or PLASMA TREATMENT device
- Wide range of ATTACHMENT and TOOLS

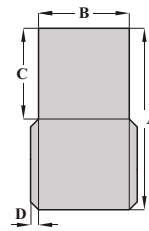
MAIN JOBS DIMENSIONS

STRAIGHT LINE BOXES



B min	350 mm / 13,78 in
B max	1600 mm / 62,99 in
L min	300 mm / 11,81 in
L max	1000 mm / 39,37 in

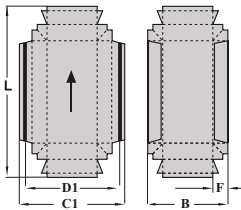
POCKET FOLD (ATTACHMENT)



A min	* / *
A max	* / *
B min	* / *
B max	* / *
C min	* / *
C max	* / *
D min	* / *
D max	* / *

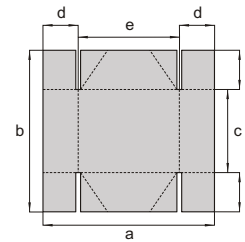
* MADE ON DEMAND

DOUBLE WALL BOXES



B min	190 mm / 7,48 in
B max	1500 mm / 59,06 in
F min	25 mm / 0,98 in
C1 max	1600 mm / 62,99 in
D1 max	1580 mm / 62,20 in
L min	150 mm / 5,91 in
L max	1000 mm / 39,37 in

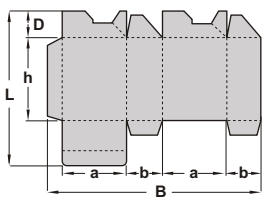
FOUR CORNER BOXES



*** k4 version**

a min	320 mm / 12,60 in
a max	1600 mm / 62,99 in
b min	430 mm / 16,93 in
b max	900 mm / 35,43 in
c min	250 mm / 9,84 in
c max	250 mm / 9,84 in
d min	90 mm / 3,54 in
d max	280 mm / 11,02 in
e min	140 mm / 5,51 in

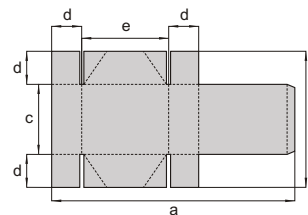
CRASHLOCK BOTTOM



*** k3 version**

B min	370 mm / 14,57 in
B max	1600 mm / 62,99 in
D max	255 mm / 10,04 in
L max	1000 mm / 39,37 in
h min	150 mm / 5,91 in
a min	100 mm / 3,94 in
b min	80 mm / 3,15 in

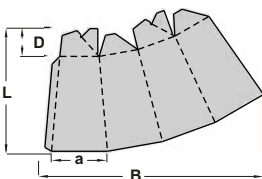
FOUR CORNER BOXES WITH LID



*** k4 version**

a max	1600 mm / 62,99 in
b max	900 mm / 35,43 in
c min	250 mm / 9,84 in
c max	250 mm / 9,84 in
d min	90 mm / 3,54 in
d max	280 mm / 11,02 in
e min	140 mm / 5,51 in

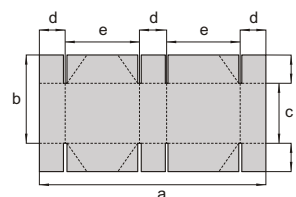
PYRAMID (CRASHLOCK BOTTOM)



*** k3 version**

L max	1000 mm / 39,37 in
D max	255 mm / 10,04 in
a min	100 mm / 3,94 in
B max	1600 mm / 62,99 in

SIX CORNER BOXES



*** k6 version**

a min	550 mm / 21,65 in
a max	1600 mm / 62,99 in
b min	430 mm / 16,93 in
b max	900 mm / 35,43 in
c min	250 mm / 9,84 in
c max	250 mm / 9,84 in
d min	90 mm / 3,54 in
d max	280 mm / 11,02 in
e min	140 mm / 5,51 in

SUPPLEMENTARY CONVERTING MACHINES



**DIGIPACK
MACHINES**



**AUTOMATIC TAPING
MACHINES**



**GOLD EMBOSING
ATTACHMENT**

Versor

www.versor.pl

YOUR LOCAL CONTACT :

POLAND :

85-794 BYDGOSZCZ , ul. Lawinowa 1E/31
PH. +48 61 861 70 30 , mailto : sales@versor.pl