

# Computer die cutting system



## RotacuT™ *Advance*

**66" x 120"**

**1600 x 3000mm**

### STANDARD FEATURES

### WHY?

No lead edge trim production

Saves board cost

Lead edge feeder

Feeds heavy, light, warped

Patented feeder freewheel

Stops dragging over feeder

Measure and correct each sheet

Guarantees tight register

Electrostatic waste separation

Removes waste scientifically

Adjustable flared slotting tools

Makes neater, safer boxes

Multiple feed registration

Makes boxes to 200" or 5m

Self-adjusting driven anvil

Ensures box accuracy

No pull rolls

Stops crush and skew

**It's going to be hard to compete against this!**

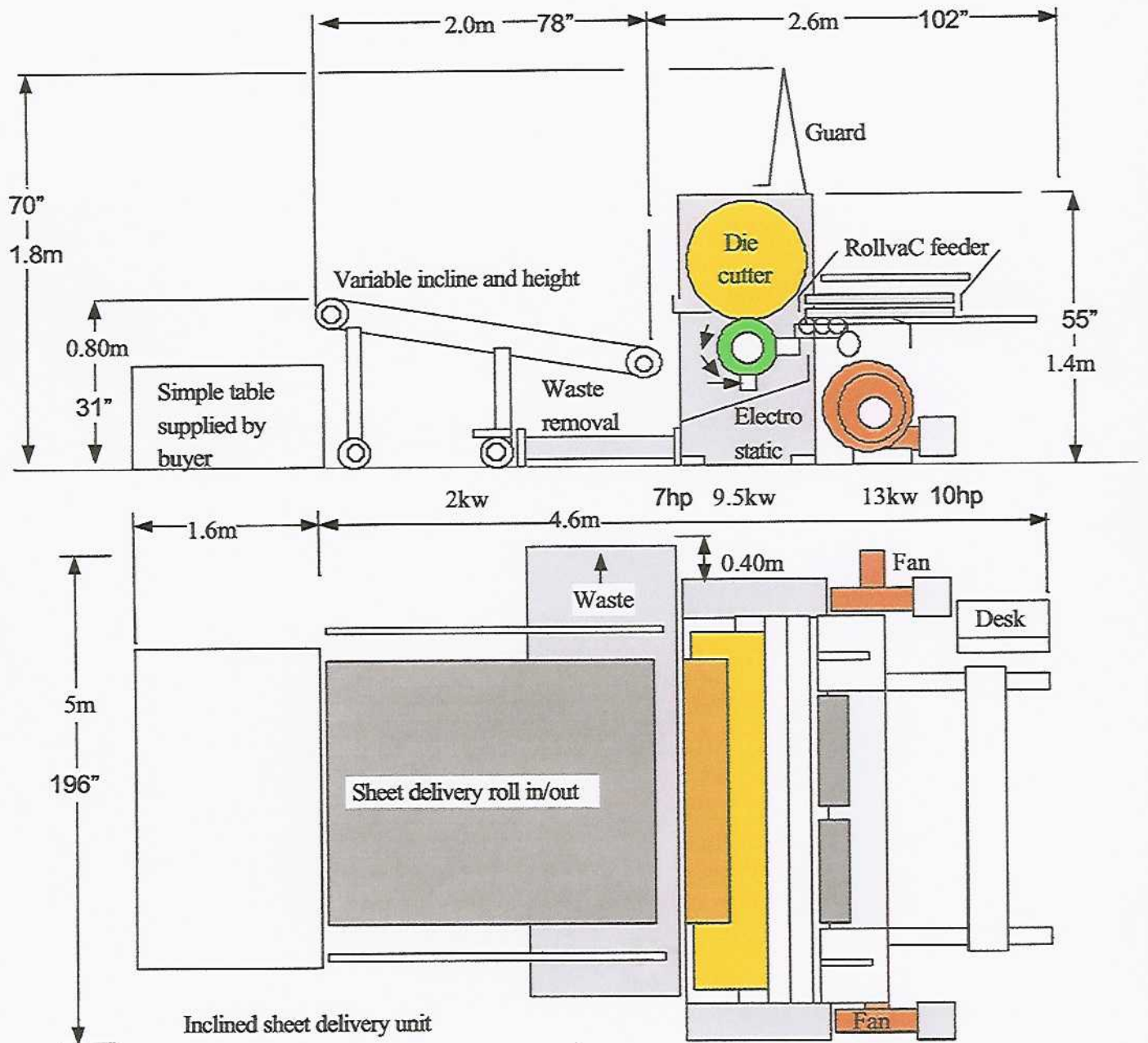
USA – Gary Lovelace: Tel: 001-850-432-6598 • UK – Len Ellison: Tel: 44 (0) 780-183-9699

C.I. Ltd., P.O. Box 32, Bramhall, Stockport, Cheshire, SK7 1RP, England

Tel: 44 (0) 161-440-9447, 44 (0) 161-440-7799 • Fax: 44 (0) 161-440-0734

Sales@corserve.com      www.corserve.com

# RotacuT Plain die cutter



**A new rotary die cutter  
called  
*RotacuT Advance***

Thank you for enquiring about our new product.  
These are the reasons why our computerised die cutter is replacing platen and conventional rotary die cutting

- ✓ Smaller machine than a platen die cutter
- ✓ Cheaper to run,  $\frac{1}{2}$  the labour,  $\frac{1}{4}$  the power
- ✓ Larger blank size, 1.6m x 3.0m, 66" x 120"
- ✓ Uses new technology, not old style chains and gears
- ✓ Low cost easy maintenance and low cost running
- ✓ Runs no lead edge trim, the first in the world.
- ✓ Costs  $\frac{1}{3}$  the price of a flat bed, makes twice the \$'s
- ✓ Easier to use, and with minimum training.
- ✓ Runs standard work with adjustable steel tooling
- ✓ Uses world standard 66", 1.67m formes

If you would like more information on this radically new piece of equipment, we will be pleased to visit you to make a full presentation and to discuss your commercial justification

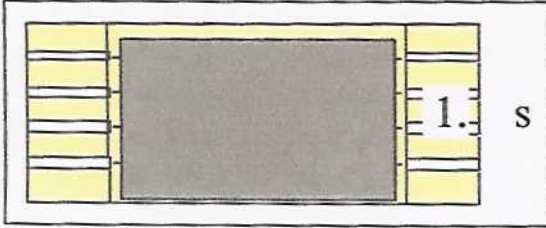
Yours sincerely

Tony Sullivan  
Managing Director  
B.Sc. C.Eng. M.I.Mech.E.

# RotacuT extended box types

## Five panel boxes with tools

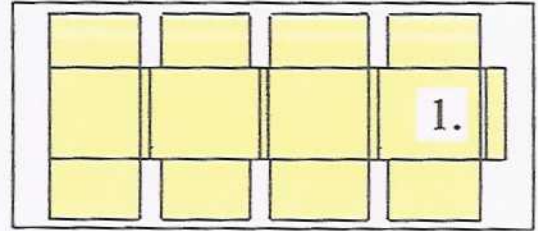
One registration within 1.6m, 66" circumference



0406-0411 boxes

## Slot crease with tools

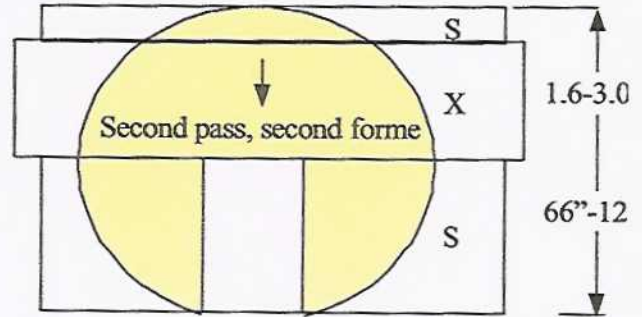
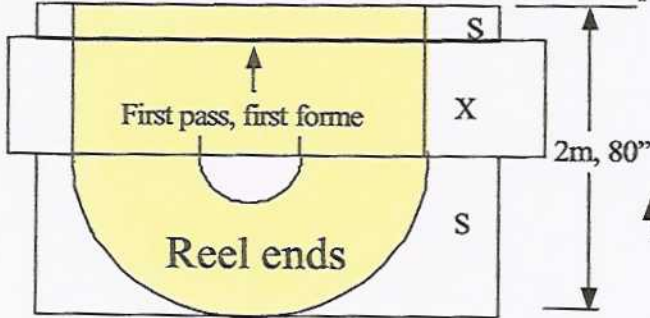
One registration within circumference



0200-0203, 0209, 406 boxes

## Extended die cutting with four forms 5 panel slotting with adjustable tools

Two registrations, two forms and 2 passes, boxes greater than circumference



Standard zone = board speed same as drum speed

Extended zone = board speed different to drum speed

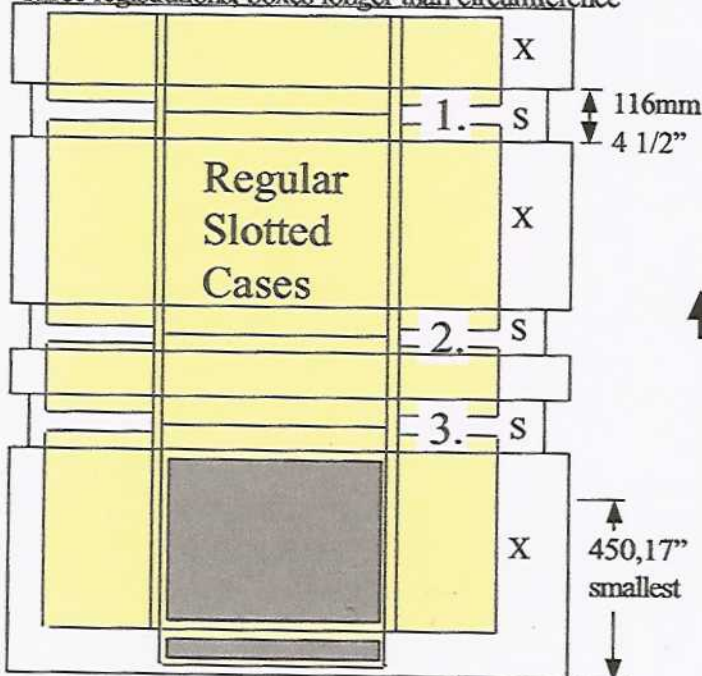
Traction rubber in static zones =

Standard zone = grip, cut, crease =   
 Extended zone = no grip, cut crease =

Horizontal slot knives must always be 'arrow head'

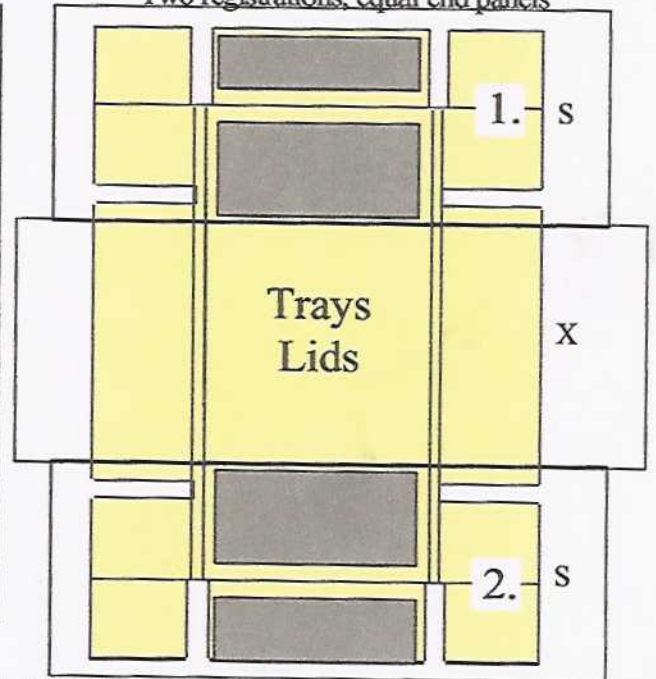
## Extended single forme die cutting with 2 or 3 registrations per cycle

Three registrations, boxes longer than circumference



0200-0203 boxes

Two registrations, equal end panels



0401-0403 0450-0460 0300-0306 0308-0314 boxes

Zero edge trim is standard where box designs permit