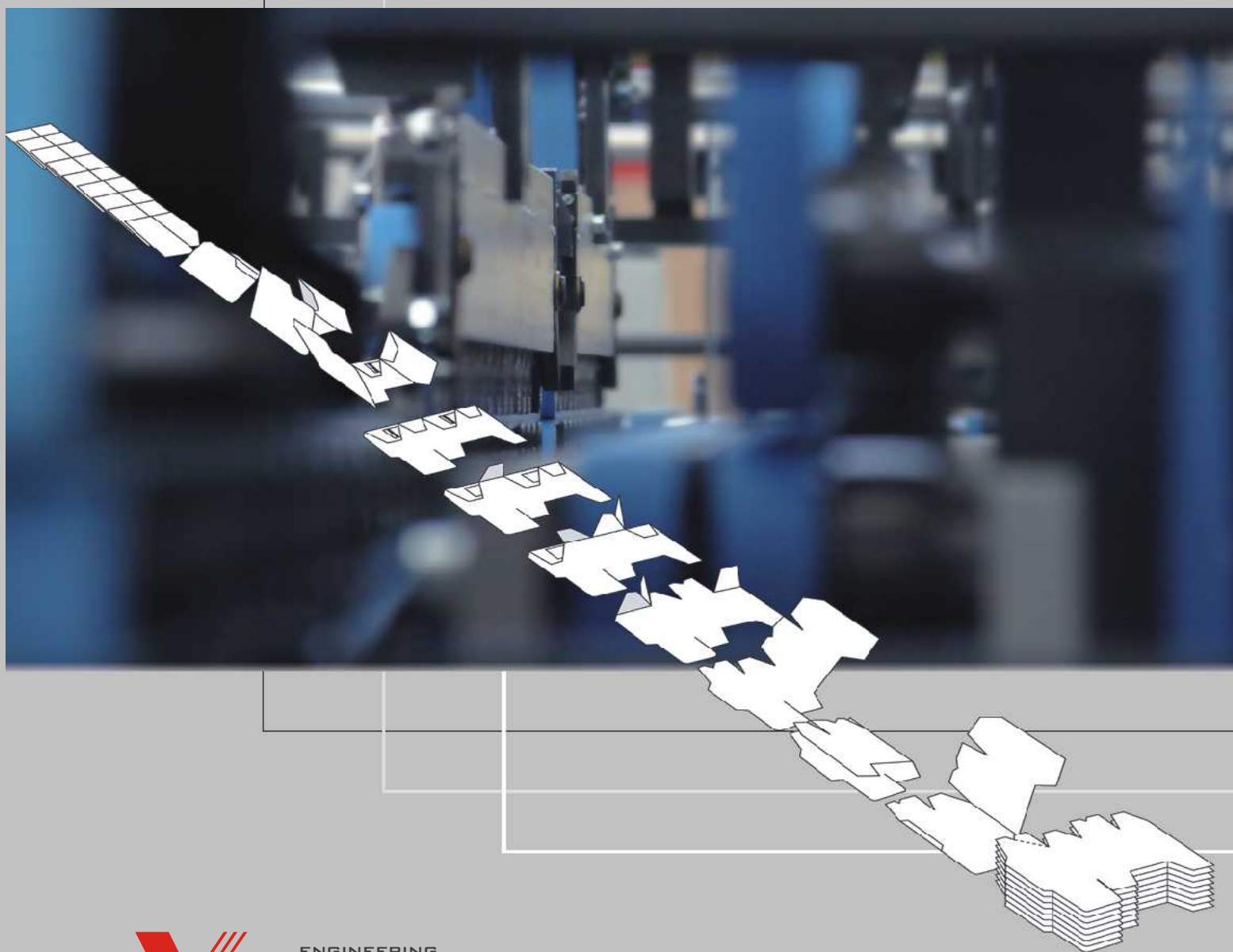

FOLDING and GLUING MACHINE

PASSIO

FOR CARTON BOX INDUSTRY

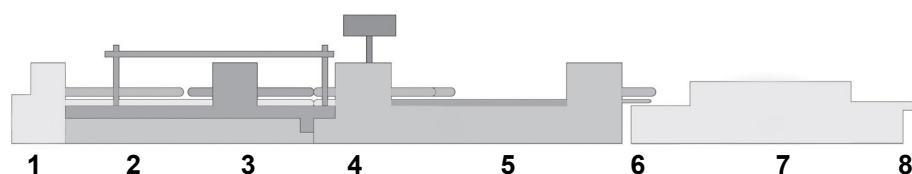


BASIC VERSIONS

PASSIO folder gluer is 2 widths (80 or 100) manufactured and both of them are 3 versions available which are:

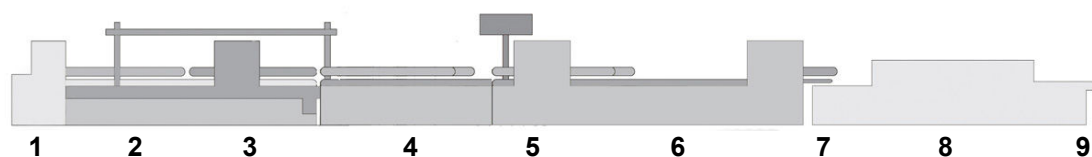
- k3 : crash lock bottom boxes ready
- k4 : 4 corner collapsible boxes ready
- k6 : 6 corner collapsible boxes ready

- **K3 cross section - crash lock bottom version :**



- | | |
|----------------------|----------------------|
| 1 Feeder | 5 Folding station |
| 2 Prefolding section | 6 Transfer station |
| 3 Lockbottom module | 7 Compression module |
| 4 Gluing section | 8 Delivery section |

- **K4/K6 cross section – back folding versions :**



- | | |
|------------------------|----------------------|
| 1 Feeder | 6 Folding station |
| 2 Prefolding section | 7 Transfer station |
| 3 Lockbottom module | 8 Compression module |
| 4 4 or 6 corner module | 9 Delivery section |
| 5 Gluing section | |



TECHNICAL DATA

CONVERTIBLE STOCK	
Folding box board	GSM
Microflute	TYPE
Corrugated board	TYPE

DRIVE SYSTEM	
Inching speed	m/min : ft/min
Operating speed *	m/min : ft/min
optional	m/min : ft/min

SPACE REQUIREMENT	
Length	m : ft
k3 version	m : ft
k4 / k6 version	m : ft
Width	m : ft
Height	m : ft
Weight, approx.	t : US t

INSTALLATION	
Voltage	V
Motor power	kW
Compressed air	bar : psi

PASSIO 80
200 - 800
N - F - E
n.a.

PASSIO 100
200 - 800
N - F - E
n.a.

10 / 32,8
20-200 / 65-656
20-300 / 65-984

10 / 32,8
20-200 / 65-656
20-300 / 65-984

10,50 / 34,45
10,50 / 34,45
12,50 / 41,01
1,25 / 4,10
1,48 / 4,86
3,50 / 4,20

10,50 / 34,45
10,50 / 34,45
12,50 / 41,01
1,45 / 4,76
1,48 / 4,86
3,90 / 4,69

400 N-PE / 208 3PH
14,00
6 / 87

400 N-PE / 208 3PH
16,50
6 / 87

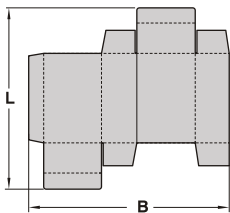
MAJOR OPTIONS

- MANUAL or MOTORIZED setting system
- FRICTION or VACUUM feeder
- SQUARING device at transfer station
- MECHANICAL or PNEUMATIC compression station
- LOW or HIGH PRESSURE cold gluing system
- ADDITIONAL GLUE GUNS (1 - 16 pcs)
- COMPACT or TOP-GUARD glue controller
- CODE READING and/or GLUE TRACK CHECKING
- Failed boxes EJECTOR
- HOT-MELT or PUR gluing systems
- BRAILLE embossing device
- WINDOW PATCHING device
- GRINDING or PLASMA TREATMENT device
- Wide range of ATTACHMENT and TOOLS

MAIN JOBS DIMENSIONS

STRAIGHT LINE BOXES

PASSIO 80

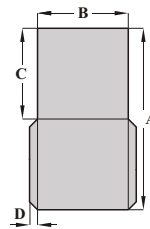


B _{min}	90 mm / 3,54 in
B _{max}	800 mm / 31,50 in
L _{min}	70 mm / 2,76 in
L _{max}	800 mm / 31,50 in

B_{min} = 45 mm / 1,77 in
with SMALL BOX ATTACHMENT

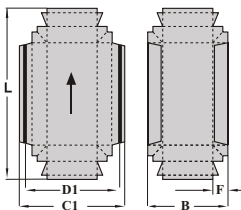
POCKET FOLD (ATTACHMENT)

PASSIO 80



A _{min}	240 mm / 9,45 in
A _{max}	700 mm / 27,56 in
B _{min}	120 mm / 4,73 in
B _{max}	760 mm / 29,92 in
C _{min}	120 mm / 4,73 in
C _{max}	350 mm / 13,78 in
D _{min}	10 mm / 0,39 in
D _{max}	15 mm / 0,59 in

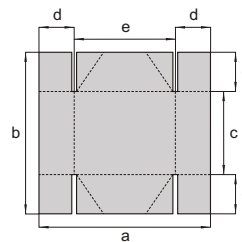
DOUBLE WALL BOXES



B _{min}	90 mm / 3,54 in
B _{max}	570 mm / 22,44 in
F _{min}	15 mm / 0,59 in
C1 _{max}	600 mm / 23,62 in
D1 _{max}	580 mm / 22,83 in
L _{min}	70 mm / 2,76 in
L _{max}	800 mm / 31,50 in

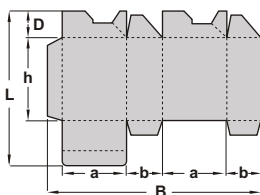
FOUR CORNER BOXES

*** k4 version**



a _{min}	150 mm / 5,91 in
a _{max}	800 mm / 31,50 in
b _{min}	150 mm / 5,91 in
b _{max}	800 mm / 31,50 in
c _{min}	100 mm / 3,94 in
d _{min}	25 mm / 0,98 in
d _{max}	150 mm / 5,91 in
e _{min}	100 mm / 3,94 in

CRASHLOCK BOTTOM

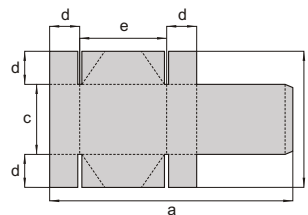


B _{min}	147 mm / 5,79 in
B _{max}	800 mm / 31,50 in
D _{max}	180 mm / 7,08 in
L _{max}	800 mm / 31,50 in
h _{min}	50 mm / 1,97 in
a _{min}	40 mm / 1,57 in
b _{min}	30 mm / 1,18 in

B_{min} = 110 mm / 4,33 in
with SPECIAL ATTACHMENT

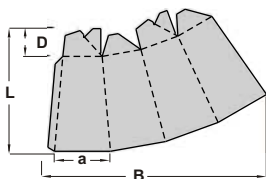
FOUR CORNER BOXES WITH LID

*** k4 version**



a _{max}	800 mm / 31,50 in
b _{max}	800 mm / 31,50 in
c _{min}	100 mm / 3,94 in
d _{min}	25 mm / 0,98 in
d _{max}	150 mm / 5,91 in
e _{min}	100 mm / 3,94 in

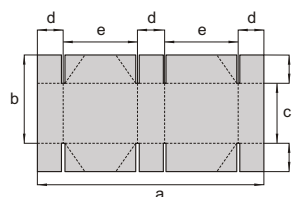
PYRAMID (CRASHLOCK BOTTOM)



L _{max}	800 mm / 31,50 in
D _{max}	135 mm / 5,31 in
a _{min}	40 mm / 1,57 in
B _{max}	800 mm / 31,50 in

SIX CORNER BOXES

*** k6 version**

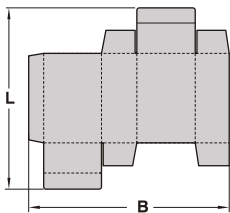


a _{min}	150 mm / 5,91 in
a _{max}	800 mm / 31,50 in
b _{min}	150 mm / 5,91 in
b _{max}	800 mm / 31,50 in
c _{min}	100 mm / 3,94 in
d _{min}	25 mm / 0,98 in
d _{max}	150 mm / 5,91 in
e _{min}	100 mm / 3,94 in

MAIN JOBS DIMENSIONS

STRAIGHT LINE BOXES

PASSIO 100

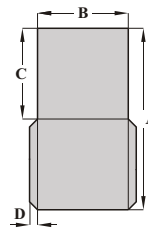


B _{min}	90 mm / 3,54 in
B _{max}	1000 mm / 39,37 in
L _{min}	70 mm / 2,76 in
L _{max}	900 mm / 35,43 in

B_{min} = 45 mm / 1,77 in
with SMALL BOX ATTACHMENT

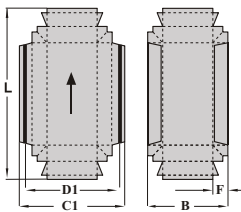
POCKET FOLD (ATTACHMENT)

PASSIO 100



A _{min}	240 mm / 9,45 in
A _{max}	700 mm / 27,56 in
B _{min}	120 mm / 4,73 in
B _{max}	800 mm / 31,50 in
C _{min}	120 mm / 4,73 in
C _{max}	350 mm / 13,78 in
D _{min}	10 mm / 0,39 in
D _{max}	15 mm / 0,59 in

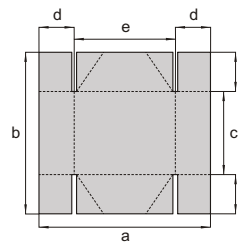
DOUBLE WALL BOXES



B _{min}	90 mm / 3,54 in
B _{max}	800 mm / 31,50 in
F _{min}	15 mm / 0,59 in
C1 _{max}	800 mm / 31,50 in
D1 _{max}	780 mm / 30,71 in
L _{min}	70 mm / 2,76 in
L _{max}	900 mm / 35,43 in

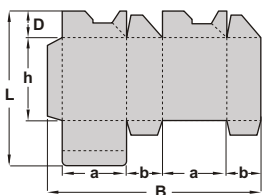
FOUR CORNER BOXES

*** k4 version**



a _{min}	150 mm / 5,91 in
a _{max}	1000 mm / 39,37 in
b _{min}	150 mm / 5,91 in
b _{max}	900 mm / 35,43 in
c _{min}	100 mm / 3,94 in
d _{min}	25 mm / 0,98 in
d _{max}	150 mm / 5,91 in
e _{min}	100 mm / 3,94 in

CRASHLOCK BOTTOM

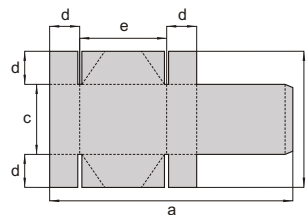


B _{min}	147 mm / 5,79 in
B _{max}	1000 mm / 39,37 in
D _{max}	240 mm / 9,45 in
L _{max}	900 mm / 35,43 in
h _{min}	50 mm / 1,97 in
a _{min}	40 mm / 1,57 in
b _{min}	30 mm / 1,18 in

B_{min} = 110 mm / 4,33 in
with SPECIAL ATTACHMENT

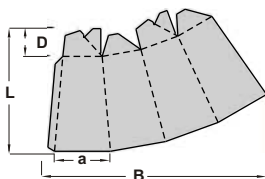
FOUR CORNER BOXES WITH LID

*** k4 version**



a _{max}	1000 mm / 39,37 in
b _{max}	900 mm / 35,43 in
c _{min}	100 mm / 3,94 in
d _{min}	25 mm / 0,98 in
d _{max}	150 mm / 5,91 in
e _{min}	100 mm / 3,94 in

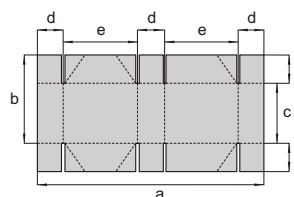
PYRAMID (CRASHLOCK BOTTOM)



L _{max}	900 mm / 35,43 in
D _{max}	135 mm / 5,31 in
a _{min}	40 mm / 1,57 in
B _{max}	1000 mm / 39,37 in

SIX CORNER BOXES

*** k6 version**



a _{min}	150 mm / 5,91 in
a _{max}	1000 mm / 39,37 in
b _{min}	150 mm / 5,91 in
b _{max}	900 mm / 35,43 in
c _{min}	100 mm / 3,94 in
d _{min}	25 mm / 0,98 in
d _{max}	150 mm / 5,91 in
e _{min}	100 mm / 3,94 in

SUPPLEMENTARY CONVERTING MACHINES



**DIGIPACK
MACHINES**



**AUTOMATIC TAPING
MACHINES**



**GOLD EMBOSING
ATTACHMENT**

Versor

www.versor.pl

YOUR LOCAL CONTACT :

POLAND :

85-794 BYDGOSZCZ , ul. Lawinowa 1E/31
PH. +48 61 861 70 30 , mailto : sales@versor.pl