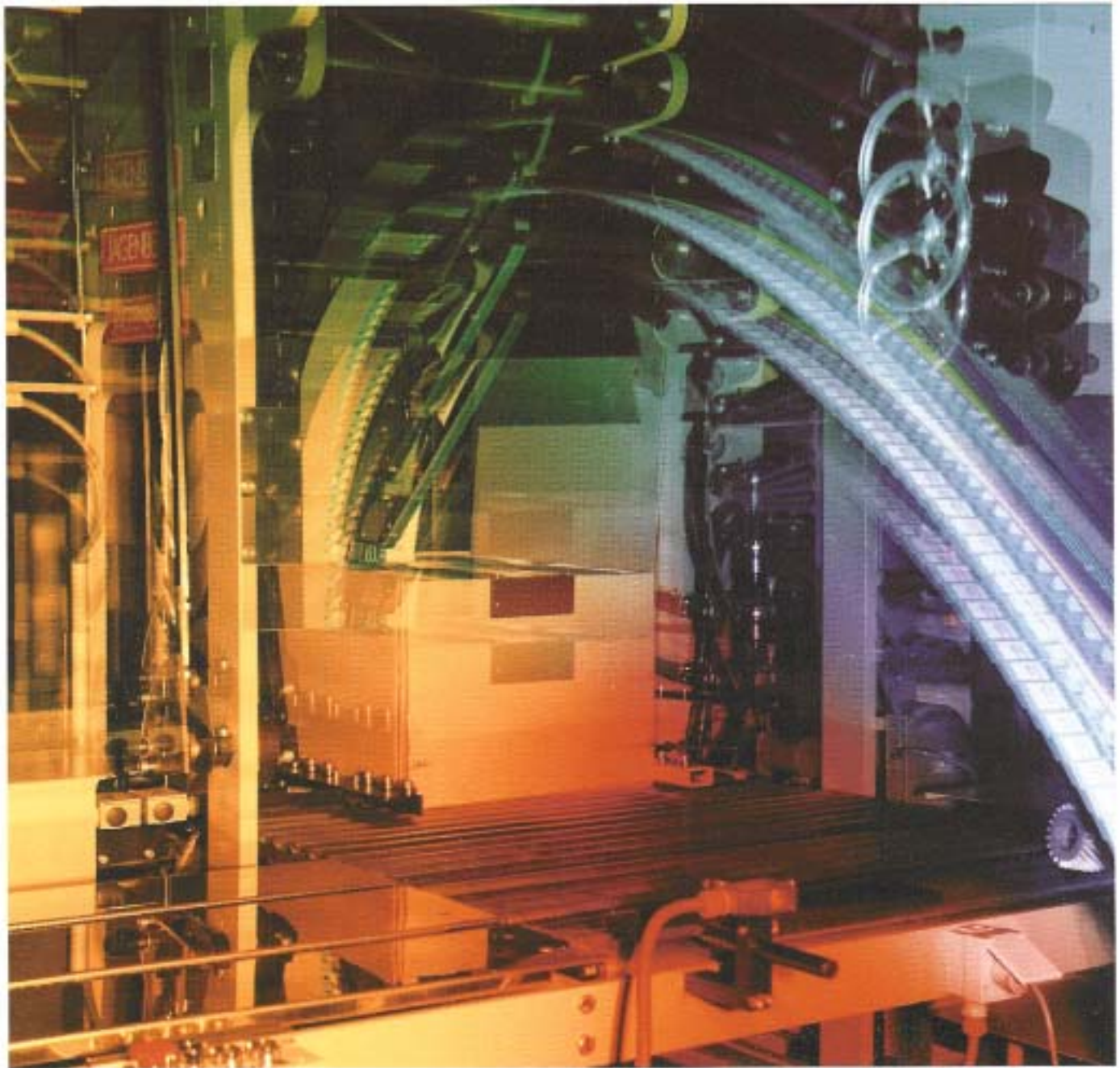


# JAPACK 40-2

Universal Folding Carton Packer



# Automatic packing of runs for

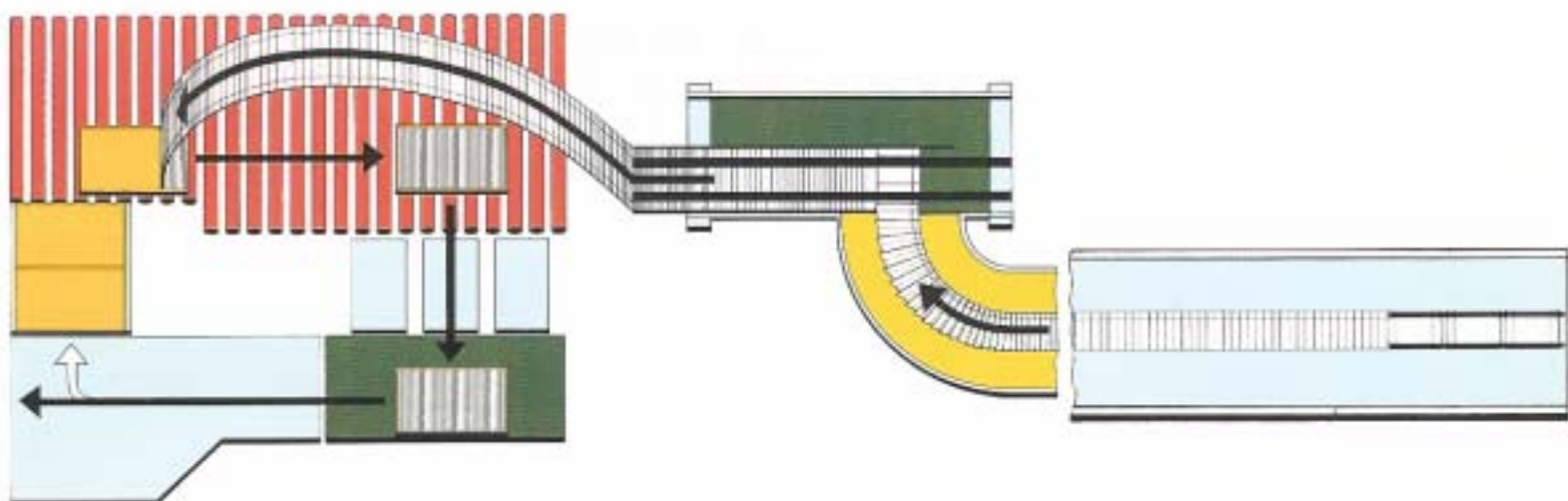
With manual take-off and packing, modern high-speed folding carton gluers frequently cannot be run at full capacity. In many cases, automatic packing **doubles the output.**

The **JAPACK 40-2** packs in multiple rows and multiple layers, making the **corrugated shipping case economical** even for small and medium-sized cartons.

## The JAPACK 40-2

- is used for runs of 50,000 cartons and upwards
- permits 40-50% faster gluing, in some cases even 120% faster (figures based on field experience)
- saves up to 2 or 3 operators, because often only one operator is required
- lowers unit cost per carton by up to 30%
- packs up to 4 layers and 4 rows
- packs on crease lines or on closure flaps
- has a makeready time averaging 10-15 minutes
- is easily moved around – can be combined with various gluers as required
- fits on most makes of folding carton gluers
- eases physical labour

Machine costs are fully compensated when machine is used 60% of the time and one operator is saved.

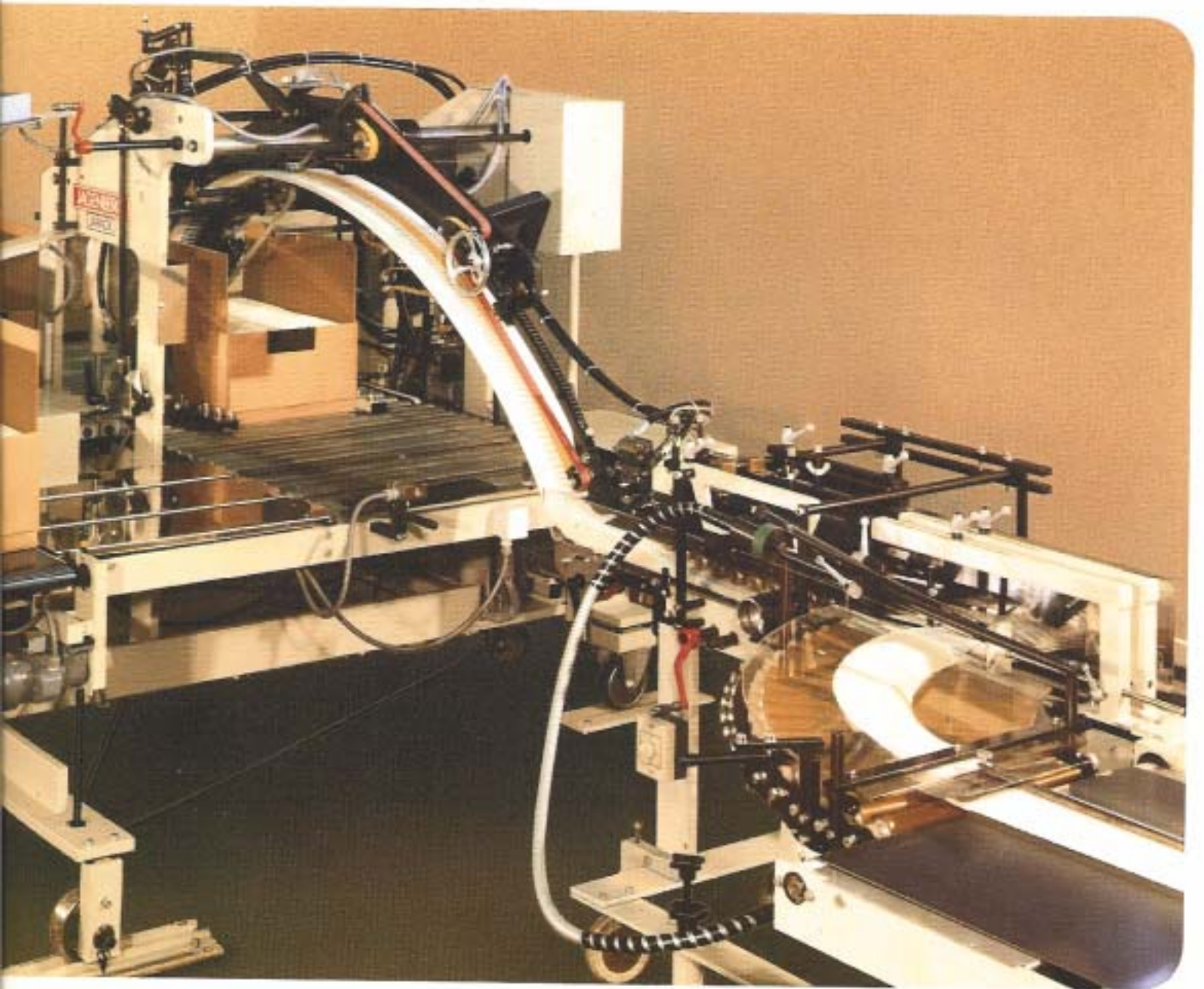


# From 50 000 cartons upwards

**Short makeready times** make packing of medium and small carton lots economical.

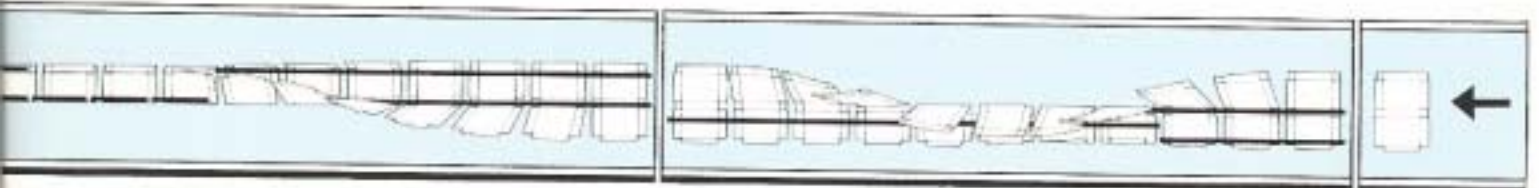
**Personnel costs** become **markedly lower** through the new system.

All these features combine to **reduce the unit cost** per carton by up to **one-third**.



**Take Advantage of this Opportunity !**

**Buy Efficiency — Buy JAPACK !**

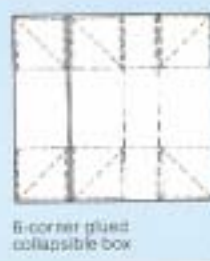
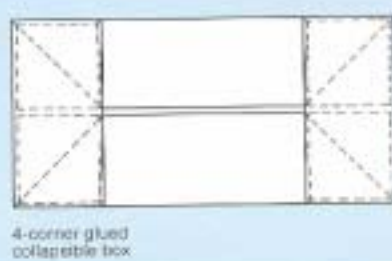
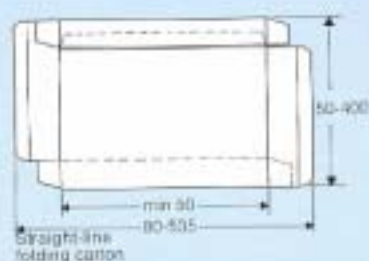


# Universal Folding Carton Packer JAPACK 40-2

## Technical Data:

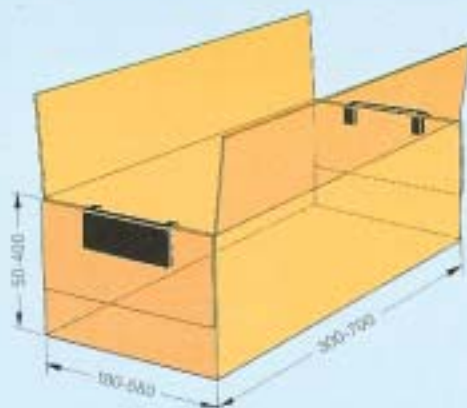
### Range of application:

straight-line folding cartons and collapsible boxes of folding box board 200–600 g/m<sup>2</sup> (40–100 lbs./MSF).



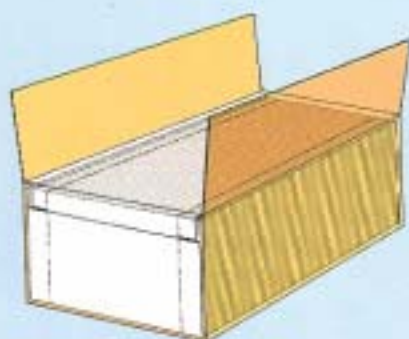
### Shipping cases:

of rigid corrugated board, solid board or other material, with glued or unglued base, with and without cover panels.

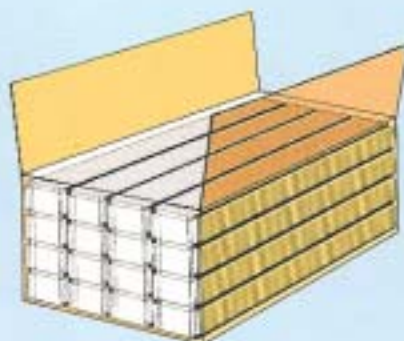


### Packing scheme:

1-row/1-layer up to 4-row/4-layer



Packed on creaselines



Packed on closure flaps

**Output:** Matches that of the folding carton gluer to which machine is connected (belt speed up to 400 m/min = 1300 ft./min.).

### Machine dimensions:

Length 4,380 mm 14'5"	Width 2,930 mm 9'8"	Height 2,150 mm 7'1"	Weight: 23,000 N (2,3 1/5 100 lbs.), net Seaworthy packing: 22 cbm/770 cu. ft.
-----------------------------	---------------------------	----------------------------	---

**Patents:** In all major industrial countries.  
For detailed description, see "technical information" bulletin fi 1/147

**JAGENBERG — Specialists since the folding carton was invented**

JAGENBERG-WERKE AG, D-4000 Düsseldorf 1, Tel. (02 11) 33 97-0, Telex 8 582 579/8 582 741/8 588 017