



Heiber + Schröder
Maschinenbau GmbH

Carton Erecting Machine Series CE

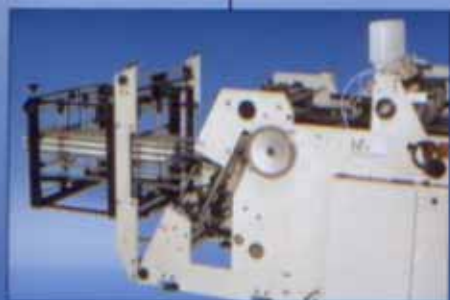
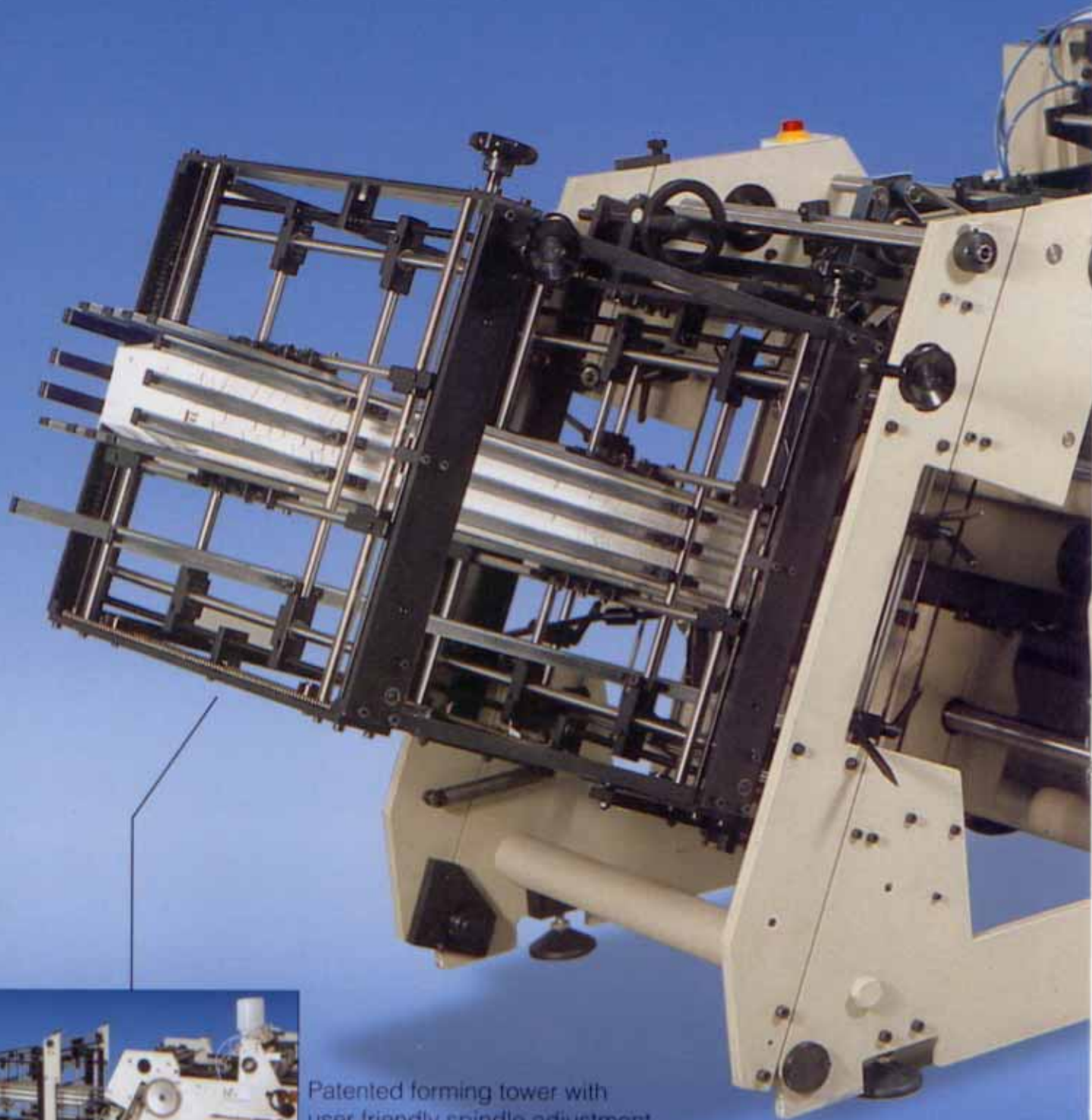


Flexible technology for flexible markets. Carton erecting. And more.

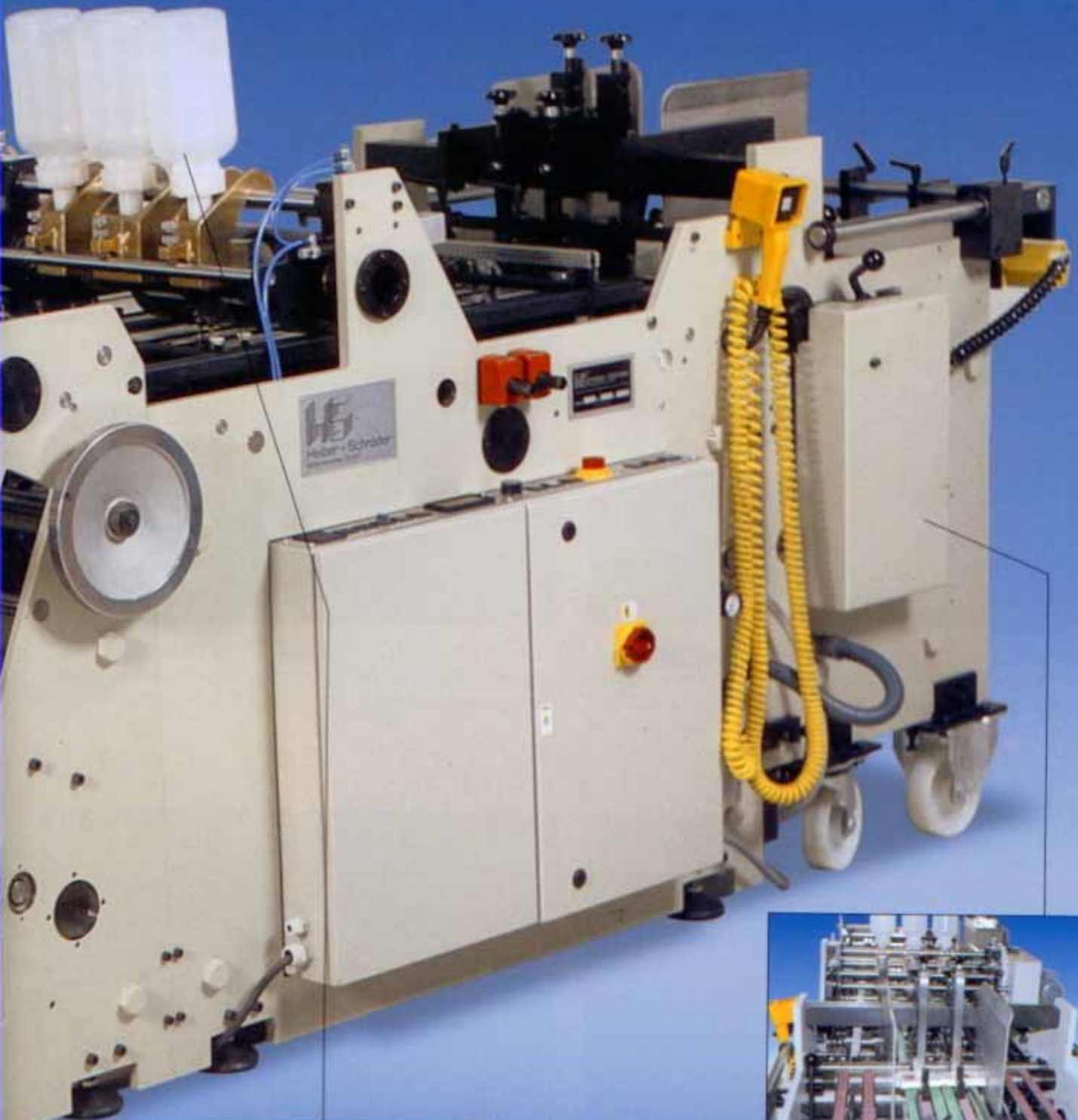
Carton Erecting Machine

CE 650-1 (Picture)

CE 850-2



Patented forming tower with user friendly spindle adjustment with easy access to forming tool provided by swing away section.



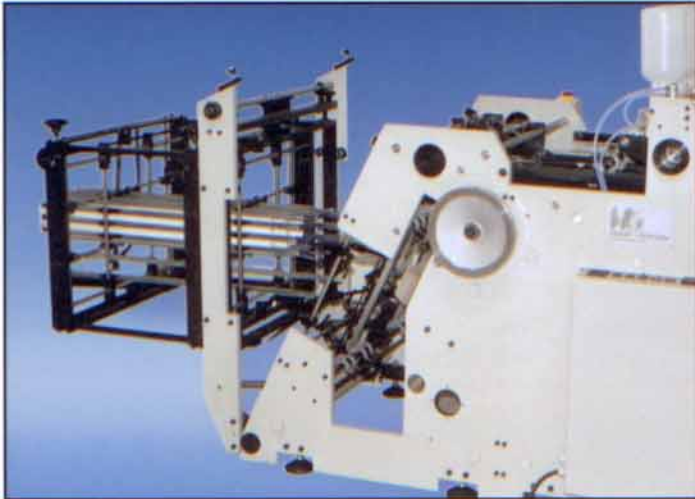
Laterally adjustable doctor blade
gluing units with automatic lift off
during stops, with independent
motor drive to maintain rotation of
gluing system.



Universal timed belt feeder,
movable on wheels.

Economy by Productivity

Economy means maximisation of productivity. By minimised down times, high output, and maximised availability. The aims of our development programme. From the very beginning. The result: Ease of operation by ergonomic design. High performance by technical competence. Reliability by higher quality standards in material, design and concept.



The patented forming tower with spindle adjustment for all sides plus the removable forming tool frame ensures changeover times are cut to a minimum.



For repeated orders pre-set, exchangeable forming tools integrated into the delivery towers may be used, and are available as optional extras (see picture above).



For the production of complicated formats causing difficulties and interlocking on standard friction feeders, we offer the rotary pick and place feeder as an alternative for these difficult blanks (picture above).



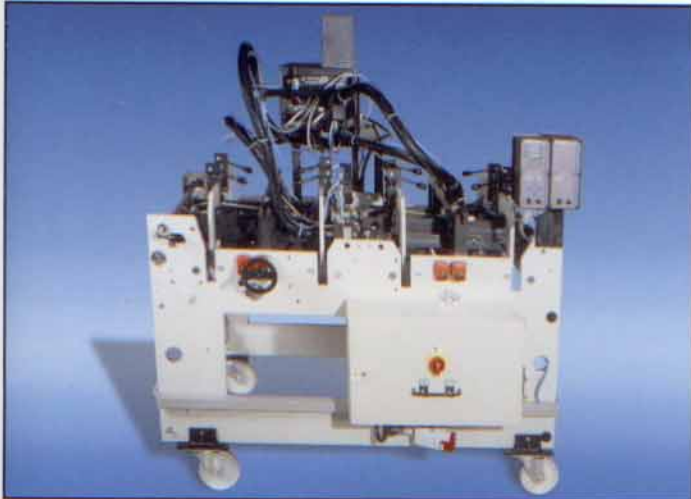
The transport belt equipped with its own drive extends the pressure time and allows higher production speeds especially when treated or coated materials are being converted. At the same time this buffer zone reduces the number of personnel required and allows multiple machine assignment.

Our technology is your advantage

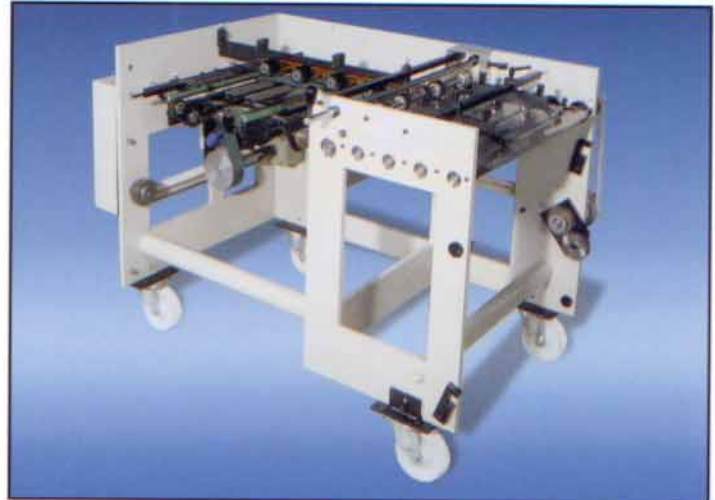
Economy by Flexibility



Economy also means: Maximisation of flexibility. The future belongs to product innovation and versatile flexibility in production. We recommend an investment without risk: Namely the latest technological concept of our new "CE" range. It gives you the certainty that you can match your production with ever-changing market requirements. With a sound once-and-for-all investment. This is made possible by the modular design of the new "CE" range, providing an unbeatable flexible modular system approach.



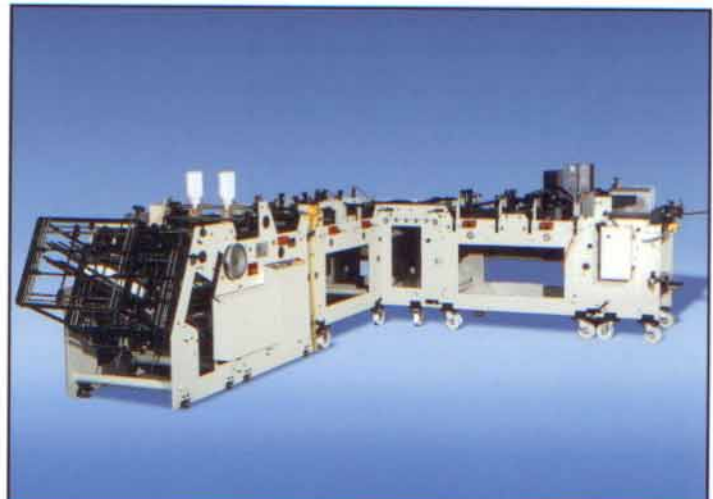
Folding station. Two upper and two lower transport belts ensure safe transport of blanks during the folding process (picture above).



Right angle station. The right angle station combines first and second folding station and provides length folding or prefolding in two running directions eliminating the need for cross folding.

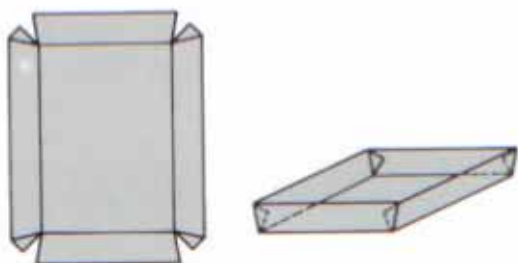


Combination of basic machine CE 650-1 with folding station for trays with two or four parallel folding flaps.

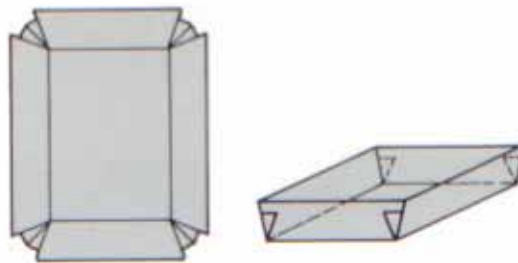


Combination of basic machine CE 650-1 with two folding stations and a right angle station for trays with four or eight parallel folding flaps in length and cross direction.

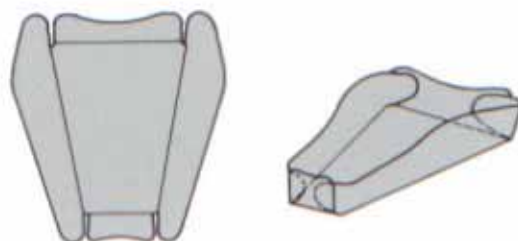
Products of basic machine



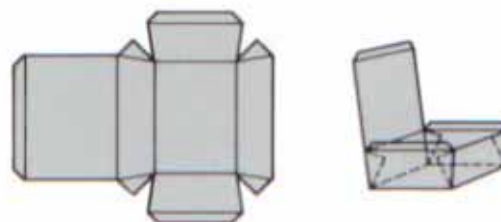
Trays with glue flaps inside/outside.



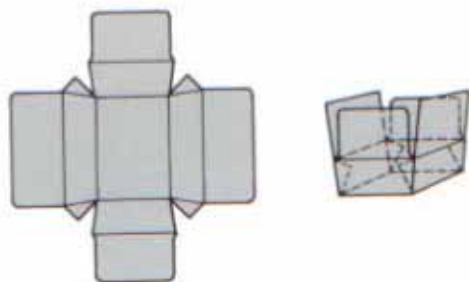
Trays with liquid-proof corners.



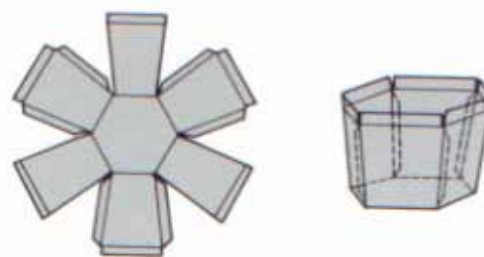
Trays with round glue flaps.



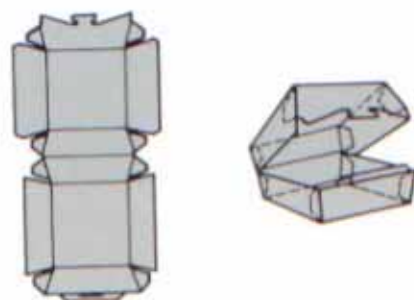
Trays with 1 lid.



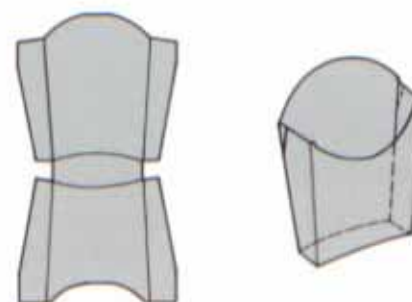
Trays with 4 top flaps.



Six-corner trays with or without collar.



Clam shell with glue flaps inside/outside.



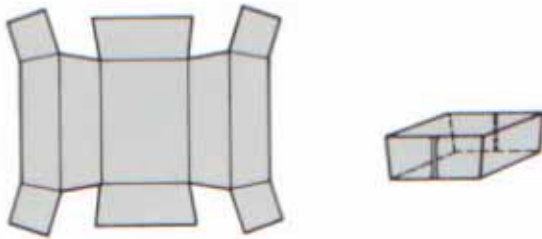
Trays for French fries.

Our technology is your advantage

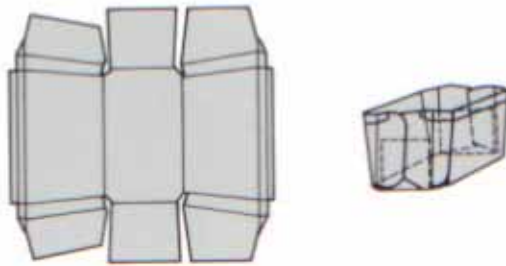
Products of additional equipment



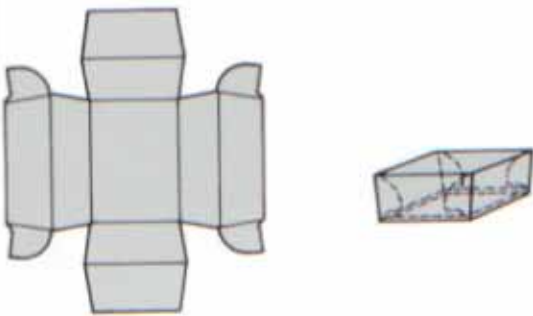
All additional units are of modular design and can be retrofitted at any later stage. Also future developments will follow this concept.



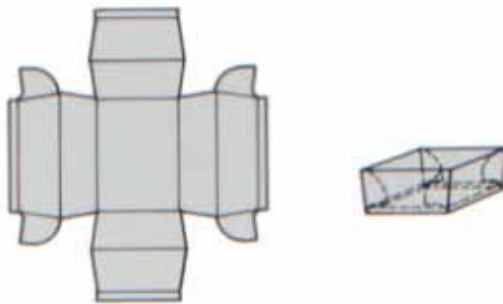
Trays with folding of 2 side flaps.



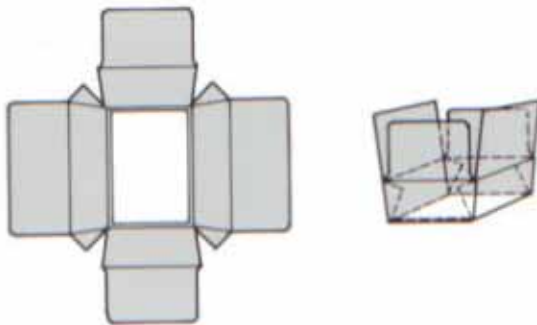
Trays with double fold on 2 parallel sides (reinforcement collar).



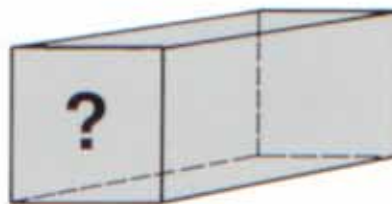
Tray with folding of 4 side flaps (Lunch box).



Trays with 4 double folded side flaps (Lunch box).

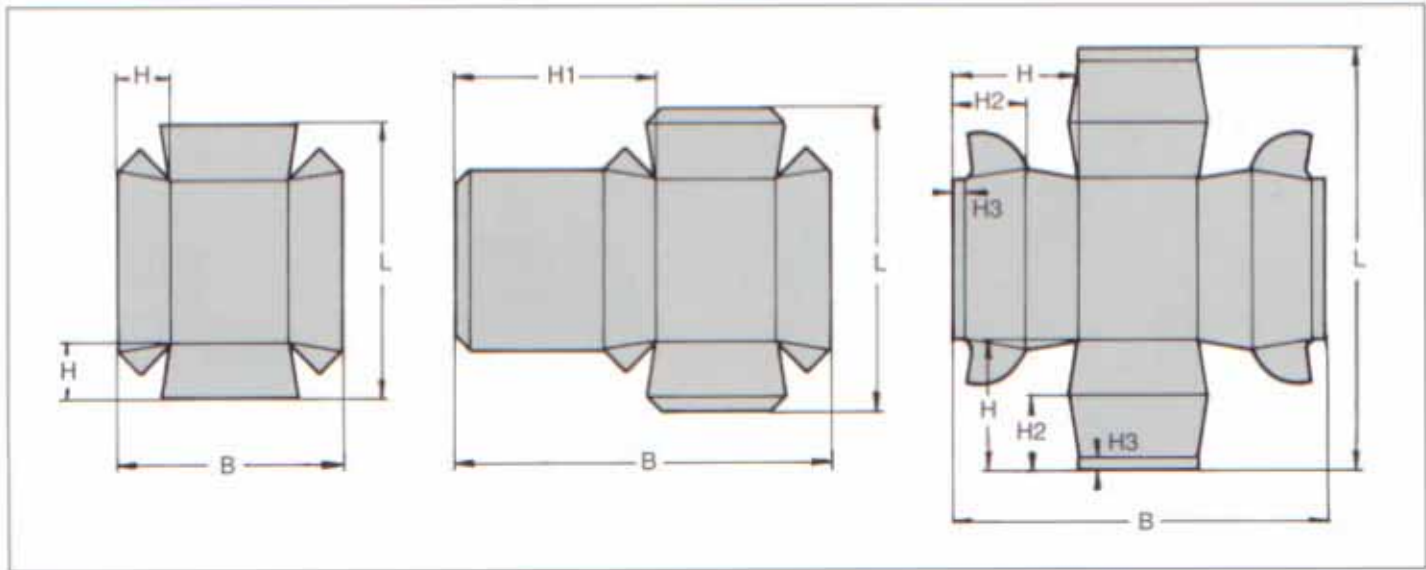


Tray with inserted bottom.



...or your new idea.

Technical data



Carton caliper	Cardboard	200 g/m ²	600 g/m ²
	Corrugated		2 mm
Machine type	CE - 650 - 1		CE - 850 - 2
Format range			
Blank length	L	100 mm - 450 mm	100 mm - 450 mm
Blank width	B	100 mm - 650 mm	100 mm - 350 mm
Height of side flaps	H	15 mm - 200 mm	15 mm - 175 mm
Height of side flaps + lid	H1	50 mm - 200 mm	
Height of folded flap	H2	10 mm - 60 mm	
Height of folded flap	H3	10 mm - 50 mm	
Conicality (angle between glued side flap and perpendicular to the bottom of the tray)		5 degrees - 40 degrees	5 degrees - 40 degrees
Output			
Normal Trays		max. 12.000 pcs/h	max. 20.000 pcs/h
Trays with folding		max. 10.000 pcs/h	
Clam shells		max. 9.000 pcs/h	max. 16.000 pcs/h

Technical data are dependent upon quality and shape of blanks. Maximum and/or minimum indications in the same blank may not be possible.
Further formats on request.

Our manufacturing programme:

- Window patching and lining machines
- Blank to blank patching machines
- Sleeve making machines
- Box making machines
- Letter file making machines
- Special machines for carton and foil handling



Heiber + Schröder Maschinenbau GmbH
Postfach 33 13
Feldheider Str. 52
D-40683 Erkrath · Germany

Tel.: (0)2104-93 76-0
Fax: (0)2104-357 49